

220016



LOCATION

Mesa, AZ

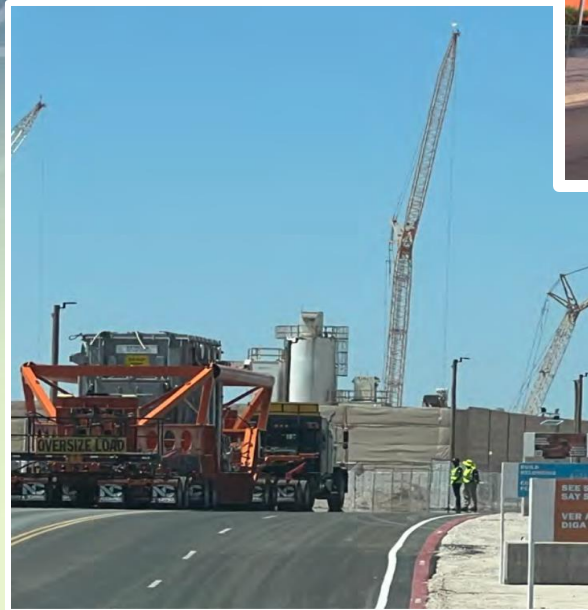
DATE OF WORK

May 2022

PROJECT

B-16035

Transformers from Manufacturer in Mexico to foundation.



In May 2022, HLI coordinated the delivery and installation of three 230,198 Lb. transformers from the manufacturer in Mexico, to the Port of Entry in El Paso, TX, and then onto Mesa, AZ. After HLI's crew arrived at the rail siding in Mesa, AZ, they began transloading the first transformer from the railcar to an over-the-road transport trailer, for final delivery to the customer's substation. The most efficient, and economical method for transloading these heavy transformers from the railcars, was to utilize the jack-and-slide system.

The following day, with police escorts in place, the haul to site commenced. HLI's crew began the first of three separate deliveries, and installations at the final site. Once inside the substation, HLI's crew moved the trailer into position adjacent to the first pad. The jack-and-slide system was assembled to facilitate the transloading from the transport trailer to the final pad using the jack-and-slide system. Now the first unit was slid onto its final pad, ready for assembly and installation. HLI's crew then returned to the rail siding to retrieve the remaining units, repeating the transloading and transportation plan. Finally, delivery and placement of the transformers accessories completed the job.

