



LOCATION

Peoria, IL

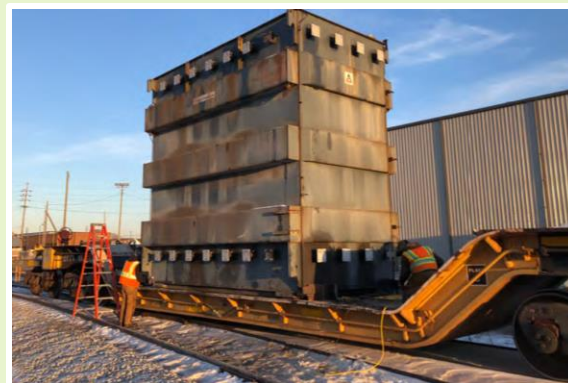
DATE OF WORK

January 2022

PROJECT

B-16629

*2 Transformers from one facility to another.*



HIL was contracted to move two 200,000 Lbs., Allis Chalmers transformers and their accessories from East Chicago, IL to Peoria, IL. HIL mobilized a specialized trailer, jacking system and specialized railcars to East Chicago. HIL's team then began building the jack-and-slide system to facilitate moving each unit onto their respective transport trailers. Once placed and secured on the trailer, each unit was transported to the onsite rail spur. The jack-and-slide system was utilized again to slide the units onto the railcar decks and secured, now a Lat-Lon GPS impact recorder was placed on each unit, and they began their journey to Peoria, IL.

HIL's team deployed to the Peoria, IL rail siding upon the arrival of the units. Units were released from their railcars and transloaded to the awaiting heavy haul trailer. Once secured, they were transported from the onsite rail siding to their final installation area within the plant. Each unit was placed horizontally next to the assembled jack-and-slide and slid over to their precast concrete pads. Once the installation inspection and alignments were verified as being correct, the units were bolted down. Now they were ready for assimilation into the customers facility. Another job completed on time and within budget.