



LOCATION

Fort White, FL

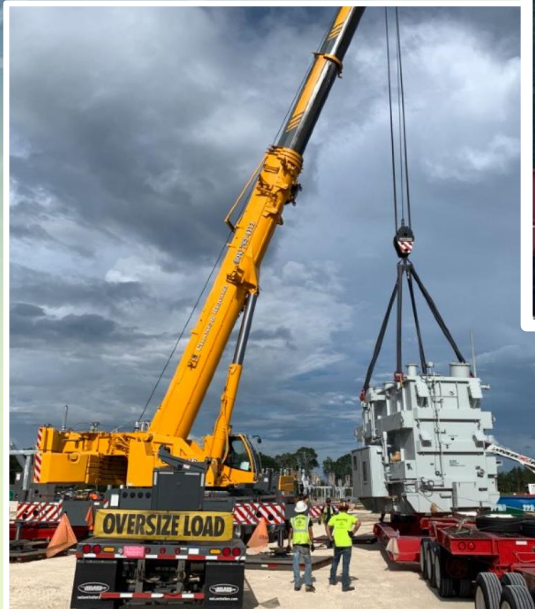
DATE OF WORK

November 2020

PROJECT

B-13987

*Transformer from port of entry to foundation*



This job required the delivery of one 148,000 Lb transformer from Laredo, TX to Fort White, FL. HLI was able to obtain all of the necessary permits and permissions to move the transformer from the transload facility, up to the final point of delivery inside the substation. Delivery was made easier by the use of an overhead crane, to lift the transformer from the railcar to the awaiting 13-axle Perimeter Frame Lowboy transport trailer.

Once loaded and secured to the transport trailer, the transformer began its slow and precise journey to its final destination inside the substation. After its safe arrival, HLI's crew freed the unit and attached the lifting slings from the crane, ready for its lift from the trailer to the slide system. With the unit lifted and placed onto the slide system, the unit was slid over to the foundation and aligned it with the existing anchor bolts. The unit was finally lowered down to the foundation and set. All transformers accessories were offloaded and placed per customers' requirements.