



LOCATION

Roswell, NM

DATE OF WORK

April 2020

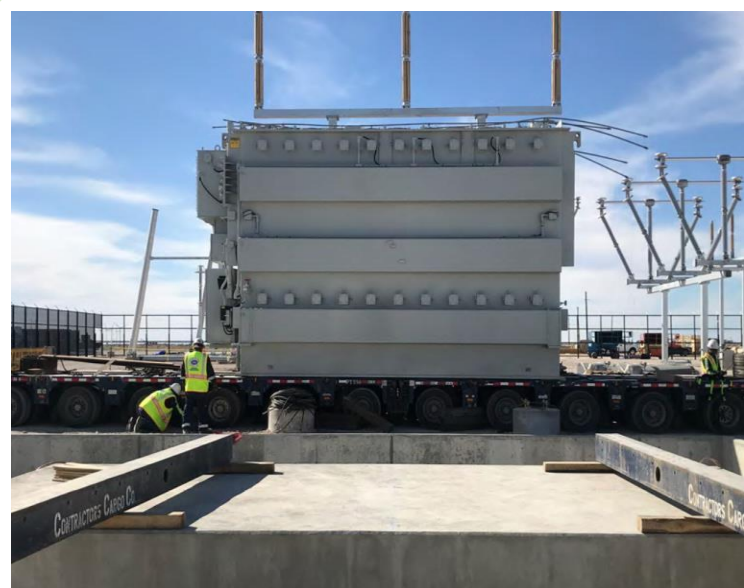
PROJECT

B-14488

*Transformers from port of entry to foundations*



In April 2020, HLI coordinated and completed the delivery and installation of two 287,800 lb transformers, from the manufacturer in Mexico, to a rail siding in Roswell, NM. After HLI's crew arrived at the rail siding, they began releasing the transformers from the railcars, to facilitate transloading to an over-the-road transport system, for final delivery to the customers substation. The most efficient, and economical method for offloading these heavy transformers from their railcars, was using the jack and slide system.



HLI's crew began the first of two separate deliveries, and installations at the final site. HLI's crew jacked the first transformer up off of its railcar, and used the slides to move the unit over to the awaiting platform trailer. Once loaded, the first transformer was trucked to its final destination inside the substation. After a safe arrival at the substation, the transformer was removed from the transporter using the jack and slide system again. This put the transformer onto its final pad ready for assembly and installation. HLI's crew then returned to the same rail siding, and repeated the process, but also delivering and placing the transformers accessories.

