



LOCATION

Ridgefield, NJ

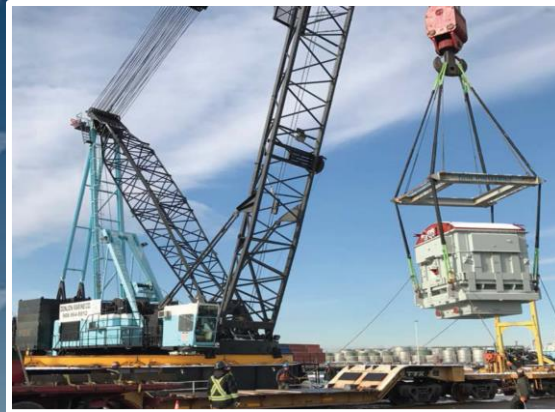
DATE OF WORK

February 2017

PROJECT

B-10978

Transformer from port of entry to foundation



HLI picked-up three transformers from the Port of Newark, NJ. The transformers arrived at the Port of Newark in a heavy lift ship where the securing were cut loose from the units. A 1,000 ton barge crane, was contracted to lift the transformers from the ships hold and transfer them to an awaiting railcar. Once they were placed on the railcar, HLI's crew started to fabricate hold down brackets to facilitate a safe journey.



Once all safety inspections of the securements had been passed, the transformers were railed to Ridgefield, NJ.

Upon their arrival, the securements were removed and the transformers were lifted onto an over the road trailer, for final delivery to the substation.

The project was completed on-time and within budget.

