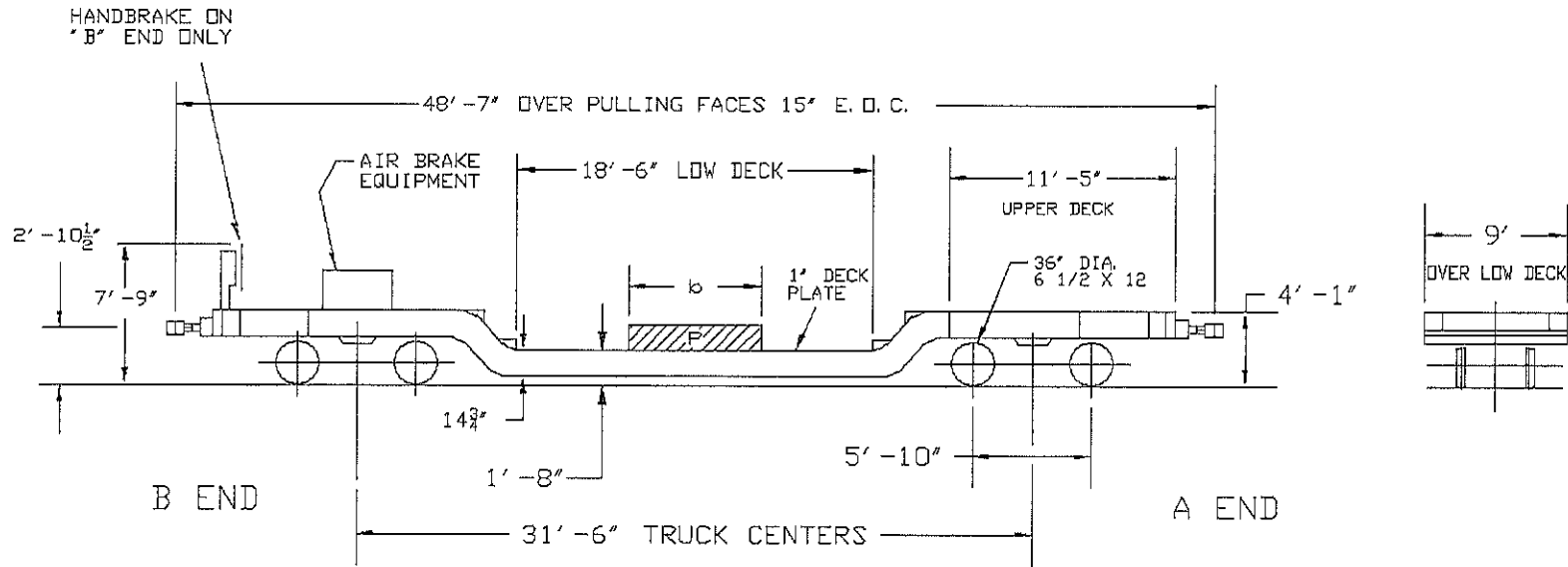


1' -8" DECK HEIGHT ABOVE RAIL IS MEASURED AT CENTER OF CARBODY, INCLUDING CAMBER, WITH A LOAD EQUAL TO 50% OF LOAD LIMIT UNIFORMLY DISTRIBUTED OVER FULL LENGTH OF DEPRESSED DECK.



MAXIMUM WEIGHT OF PARTIAL LENGTH LOADS

LOAD LENGTH (FT) (b)	LOAD (1000 LBS) (P)
0	169.2*
2	172.5
4	176.0
6	179.0
8	183.0
10	186.5
12	190.5
14	194.5
16	198.5
18 & OVER	LOAD LIMIT

CAR NUMBER	LOAD LIMIT LBS	LIGHT WEIGHT LBS
130970	200,500	62,500
130971	200,600	62,400
130972	201,000	62,000
AVERAGE	200,700	62,300

CAR NUMBERS QTTX 130970-130972

\* MAX. CONCENTRATED LOAD

-CENTER OF GRAVITY - EMPTY = 24" ATR  
 -CLEARANCE PROFILE WITHIN AAR PLATE 'B'



TTX COMPANY  
 CHICAGO, ILLINOIS

100 TON, 18'-6" DECK  
 DEPRESSED CENTER FLAT CAR

CLASS  
 MDH18

DATE  
 06-19-09

REV  
 C

12149