

Car Data

Number of Axles: 20
 Journals A.A.R. "G": 7" x 12"
 Wheel Diameter: 33"
 Axle Spacing: 5'-0"
 CG Height (empty): 50"
 Light Weight: 354,000 lbs
 Load Limit: 1,100,000 Lbs
 Gross Weight on Rails: 1,454,000 Lbs
 Axle Load at Gross Weight: 72,700 Lbs
 Curve Negotiability (Unloaded): 200 ft Horizontal
 2,500 ft Vertical

Special Equipment

10'-0" Reduced Pivot Each End
 Lateral Shifting - 14" Per Side
 Vertical Adjustment - ± 6"
Pin
 Diameter: 8.010"
 Height: 25" ATR
 Min Load Height: 9"
 ∅ to ∅ 100"



Contractor's Cargo Company
 Compton, CA
 Tel: (301) 609 1957
 Houston, TX
 Tel: (281) 456 9000
 www.contractorscargo.com

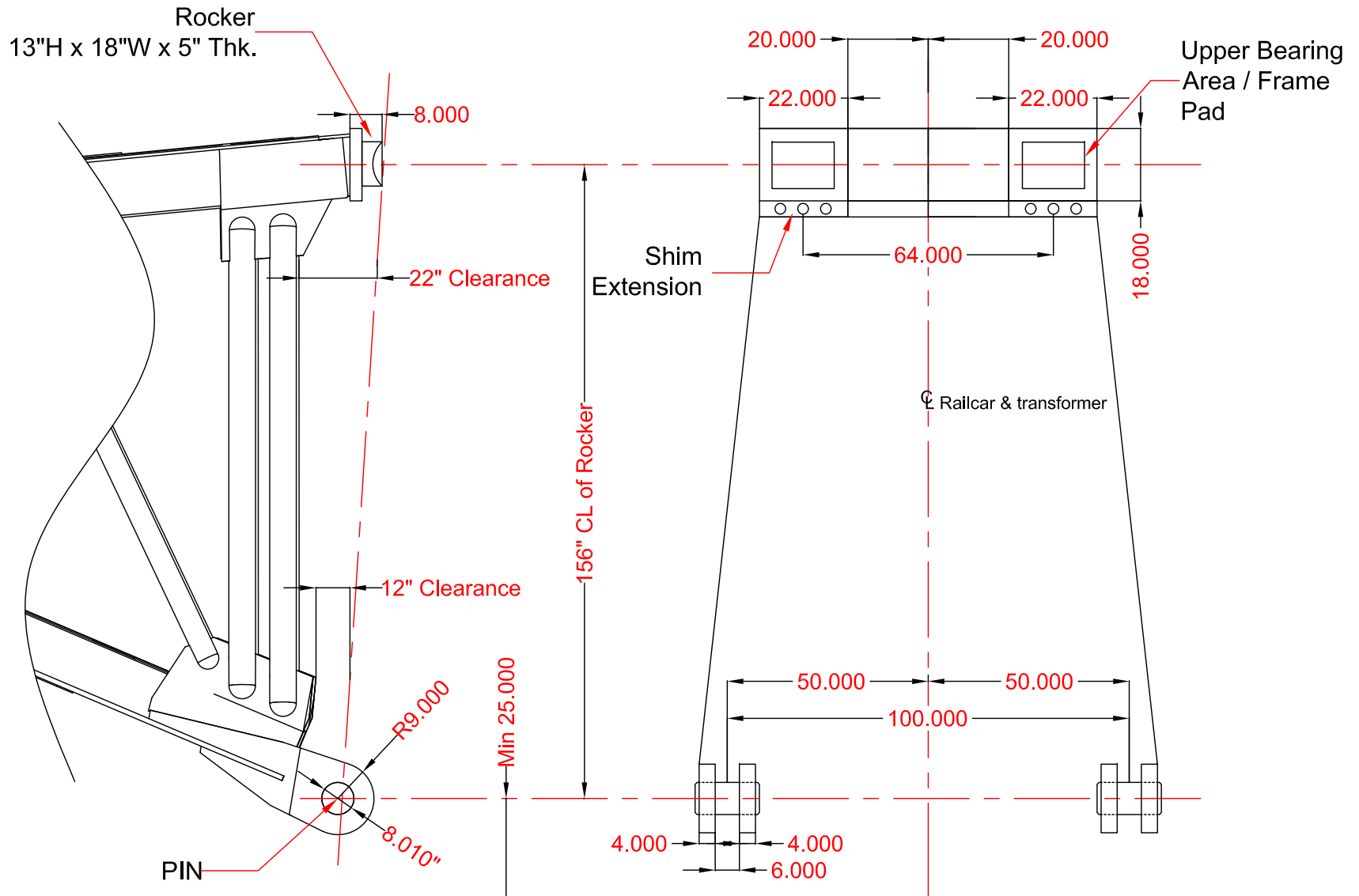


HLI Rail & Rigging, LLC
 Managed Rail Fleet
 10330 K-Lake Road
 Houston, TX 77070
 Tel: (281) 826 0009
 Fax: (281) 826 0094
 www.hli.us.com

| | |
|-----------|---------------|
| Drawn By: | HLIC |
| Date: | 03/22/2010 |
| Scale: | NONE |
| Dwg #: | 40010SH-00-10 |

CCRX 40010

20 Axle Schnabel Rail Car



All Dimensions in Inches



Contractor's Cargo Company
 Compton, CA
 Tel: (301) 609 1957
 Houston, TX
 Tel: (281) 456 9000
 www.contractorscargo.com



HLI Rail & Rigging, LLC
 Managed Rail Fleet
 10330 K-Lake Road
 Houston, TX 77070
 Tel: (281) 826 0009
 Fax: (281) 826 0094
 www.hli.us.com

| | |
|-----------|---------------|
| Drawn By: | HLIC |
| Date: | 03/22/2010 |
| Scale: | NONE |
| Dwg #: | 40010DH-01-10 |

CCRX 40010
20 Axle Schnabel Rail Car
Upper Structure Connection Data