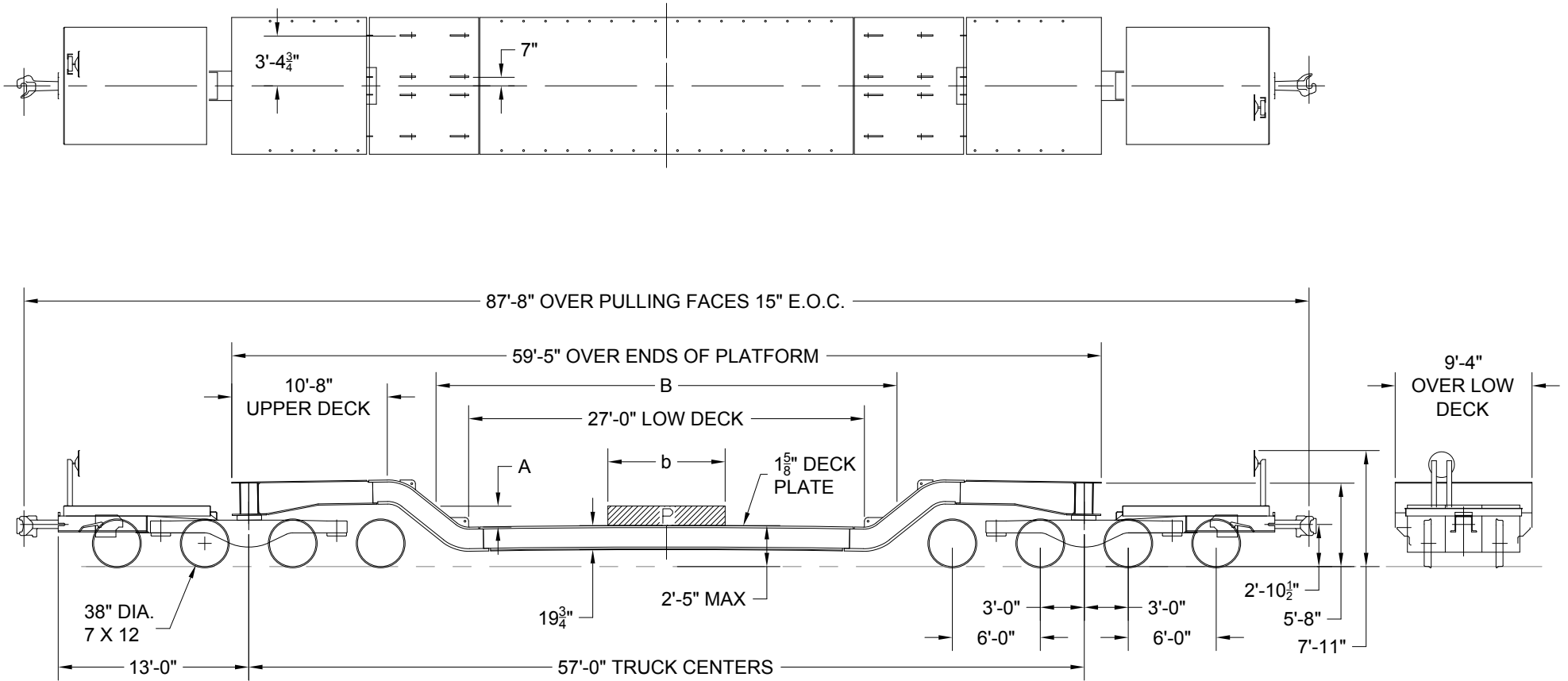


2'-5" DECK HEIGHT ABOVE RAIL IS MEASURED AT CENTER OF CARBODY, INCLUDING CAMBER, WITH A LOAD EQUAL TO 50% OF LOAD LIMIT UNIFORMLY DISTRIBUTED OVER FULL LENGTH OF LOAD DECK.



MAXIMUM WEIGHT OF PARTIAL LENGTH LOADS	
LOAD LENGTH (FT) (b)	LOAD (1000) (LBS) (P)
2	419.6*
4	427.2
6	435.1
8	443.3
10	451.9
12	460.7
14 & OVER	LOAD LIMIT

* MAX. CONCENTRATED LOAD

BOTTOM OF LOAD ABOVE DECK A	MAX. LENGTH OF LOAD B
12"	30'-6"
18"	31'-0"
24"	32'-0"

CLASS	CAR SERIES	LOAD LIMIT LBS.	LIGHT WEIGHT LBS.
DDH27	130704-130707	465,800	164,200
HDH27	130708-130713	467,100	162,900
HDH27	130718-130749	465,800	164,200

CAR NUMBERS QTTX 130704-130713
 CAR NUMBERS QTTX 130718-130749

CENTER OF GRAVITY - EMPTY = 30" ATR
 CLEARANCE PROFILE WITHIN AAR PLATE "C"

TTX TTX COMPANY
 CHICAGO, ILLINOIS

230 TON, 27 FOOT DECK
 DEPRESSED CENTER FLAT CAR

CLASS DDH27 & HDH27	DATE 06-01-00	REV G	9919
------------------------	------------------	----------	------