



LOCATION

New York, NY

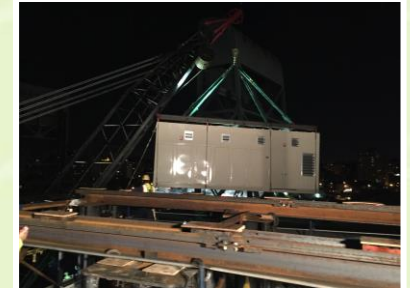
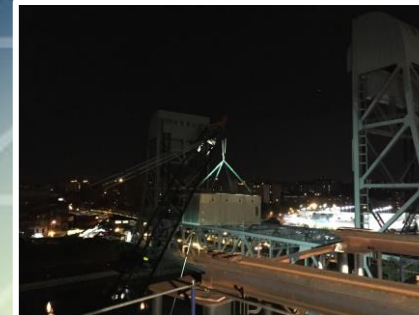
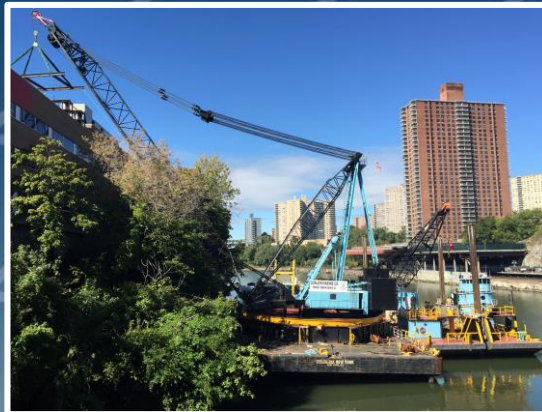
DATE OF WORK

October, 2015

PROJECT

B-9301

*Boiler Module Units*



HLI incorporated the use of a barge crane for this complex job due to access restrictions and the cranes maneuverability, to lift 2 boilers onto the hospitals roof. Prior to the lift, HLI and associates had to design a support and runway to skate the boilers from the barge crane landing location, a lift frame to accommodate both boiler units, and verify the integrity of the roof structure to support the slide operations.



Before the day of the lift, all necessary variables such as the slide system were installed. The barge crane was moored on the Harlem River, adjacent to the delivery location. The lift began at 4am under darkest. HLI's crew were on hand to meticulously oversee the maneuvering of the boilers, on to the preassembled runway, and support rails, to skate the boilers to the North end of the roof, to the final installation location. Once the boilers were successfully in-place, the disassembly of the skate system began.

