

J-150039



LOCATION

Linden, NJ

DATE OF WORK

November, 2015

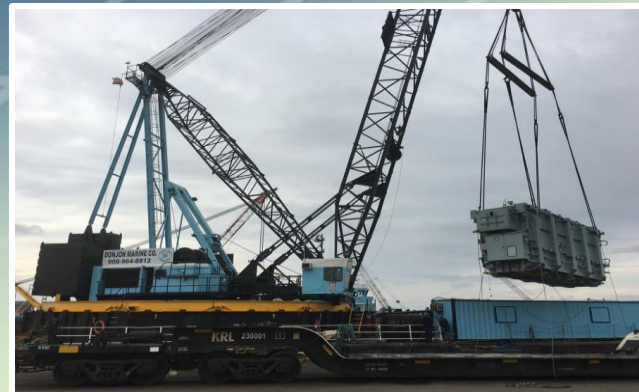
PROJECT

B-9058

Transformer from port of entry to foundation



HLI railed this 372,330 lb unit from Laredo, TX to a rail siding in Newark, NJ, 1,928 miles. HLI arrived on site and completed an on-car inspection. The transformer was then cut free from the railcar and transferred to a floating barge, by means of a floating crane, for its final leg to Linden, NJ. On arrival, HLI's rigging crew met the barge and transferred the transformer to the transport trailer.



With the transformer loaded and secured on the trailer, it was delivered to the substation. Here it was moved from the trailer to its temporary pad using a jack and slide. The unit arrived without incident. The entire job was completed safely, on time and within budget.

