



HLI Rail & Rigging, LLC

Introducing the CCRX 40010 A 550t Capacity Schnabel Railcar



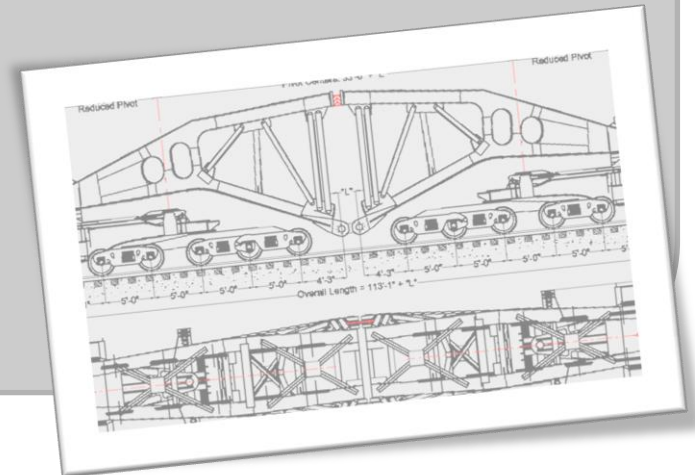


CCRX 400100 General Data

Car Data

- **Gross Capacity:** 1,100,000 Lbs
- **Empty Weight (without deck insert):** 354,000 Lbs
- **Overall Loaded Weight:** 1,454,000 Lbs
- **No. Axles:** 20
- **Max Axle Weight:** 72,700 Lbs
- **Maximum Axle Spacing:** 5'-0"
- **Maximum Curve in Unloaded State:**
 - 200ft Horizontal
 - 2,500 ft Vertical
- **Up to 14" Lateral Shift to Assist in Negotiating Curves**
- **Reduced Pivot System – Effectively 20'-0" less pivot distance**

Additional Technical Data Available Upon Request





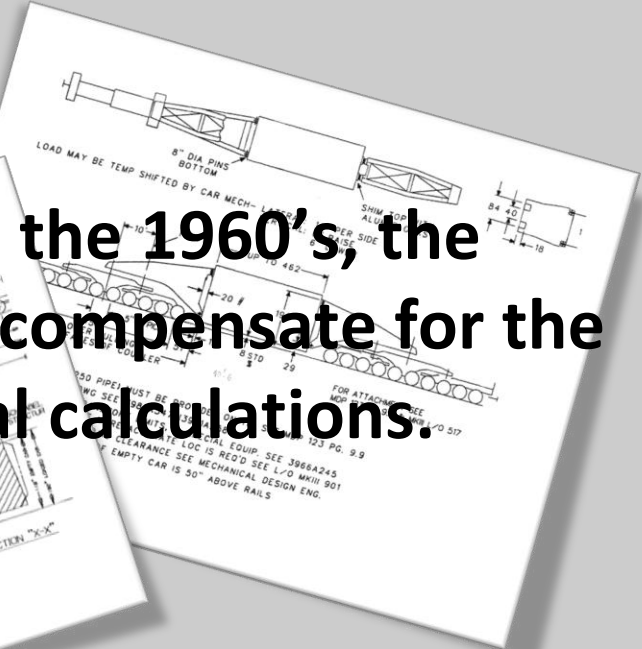
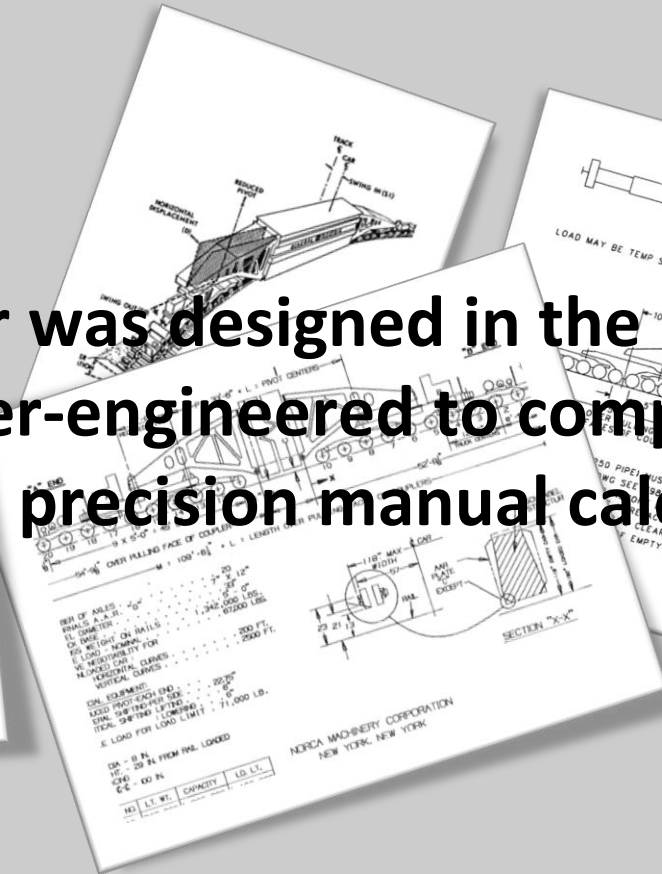
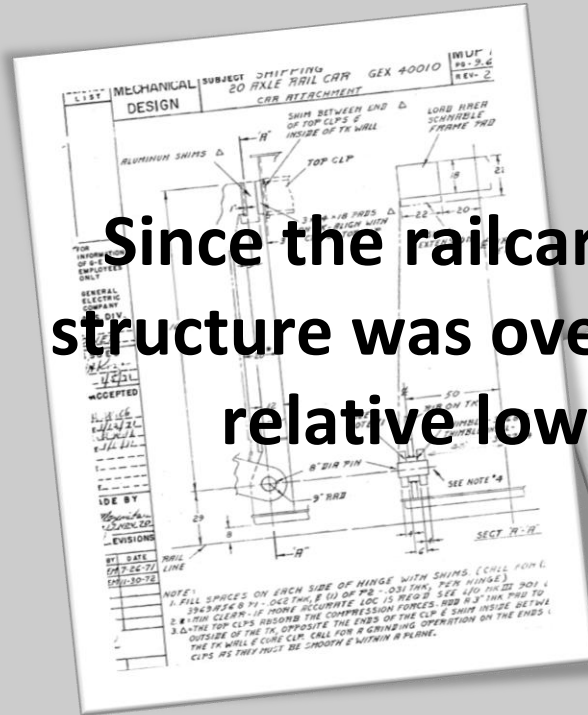
Facts & Figures

- **CCRX 40010 recently underwent a 6 month, \$1,000,000 overhaul, during which new brakes, hydraulic systems and up-rated structural components were installed.**
- **CCRX 40010 can accommodate loads up to 1,100,000 Lbs (498,952 Kgs) in Schnabel Configuration.**
- **Load may be raised or lowered up to 12" ATR (153mm) by the railcar's built-in hydraulic system.**
- **Optional Deck Insert is rated for 938,000 Lbs (425,470 Kgs) and offers space for loads up to 42'-0" (12.8m) at the base or 45'-0" (13.7m) overall.**



Engineering

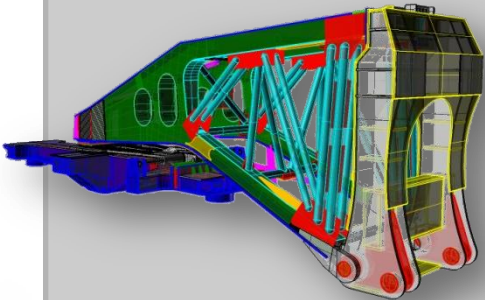
Since the railcar was designed in the 1960's, the structure was over-engineered to compensate for the relative low precision manual calculations.



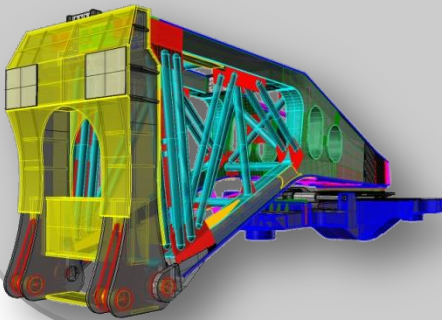


Engineering

Along with the car's refurbishment, Finite Element Analysis, Material Testing and 3D Computer Modeling were used to confirm that the gross capacity of the car could be safely increased from 1 million to 1.1 Million pounds.



These tools can also be used to evaluate the stresses imposed by your load on a case by case basis.





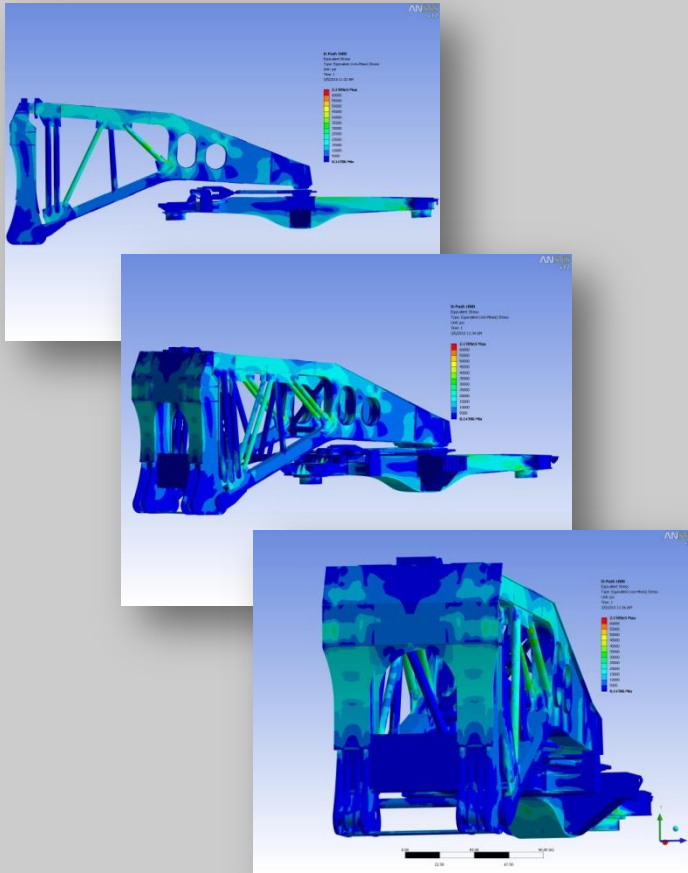
Engineering

The result is the world's strongest 20 Axle Schnabel Railcar, and the most modern available anywhere in the world.





Finite Element Analysis

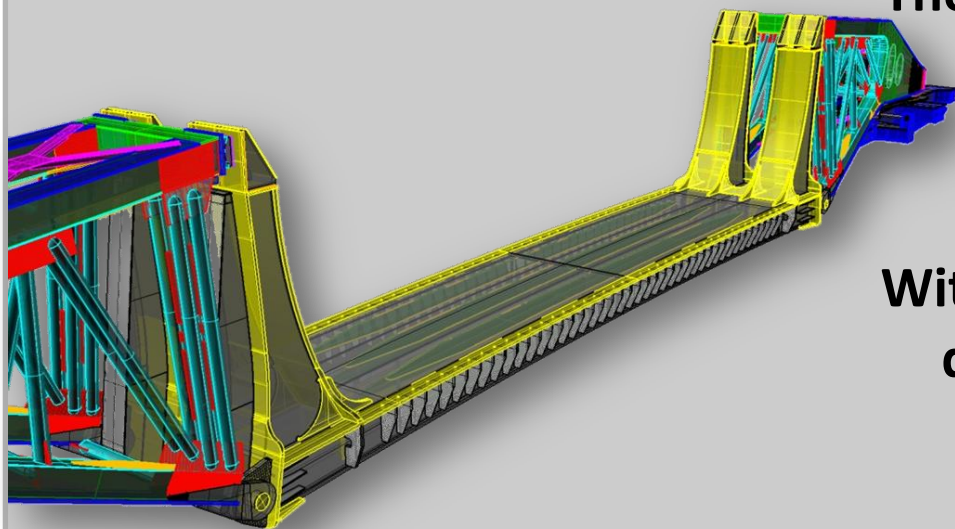


Red or Orange Coloration Denote Areas of High Stress. As you can see, CCRX 40010 handles its maximum gross load with ease.

No expense was spared to provide the safest, most efficient Schnabel Railcar System available anywhere.



470t Deck Insert



A custom 45'-0" Deck Insert has been designed to fit CCRX 40010.

The 939,000 Lbs capacity deck insert allows the car to transport loads that were not specifically designed for Schnabel Transport.

With a deck height of only 3'-0", this deck provides the optimum size to weight capability currently available.

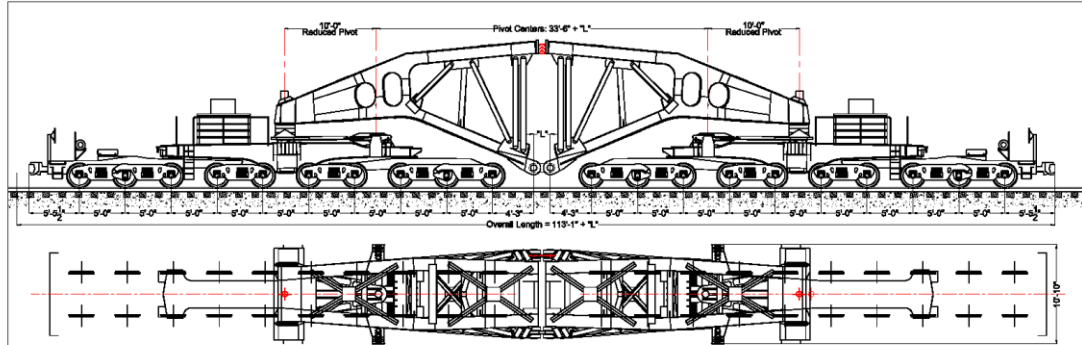


Standard Schnabel Car





CCRX40010 Schnabel Car Data



Car Data

Number of Axles:	20
Journals A.A.R. "G":	7" x 12"
Wheel Diameter:	33"
Axle Spacing:	5'-0"
CG Height (empty)	50"
Light Weight:	354,000 lbs
Load Limit:	1,100,000 Lbs
Gross Weight on Rails:	1,454,000 Lbs
Axle Load at Gross Weight:	72,700 Lbs
Curve Negotiability (Unloaded):	200 ft Horizontal 2,500 ft Vertical

Special Equipment

10'-0" Reduced Pivot Each End
Lateral Shifting - 14" Per Side
Vertical Adjustment - $\pm 6"$

Pin

Diameter:	8.010"
Height:	25" ATR
Min Load Height:	9"
\varnothing to \varnothing	100"



Contractor's Cargo Company
Compton, CA
Tel: (301) 830-1957
Houston, TX
Tel: (281) 456-9000
www.contractorscargo.com



HLI Rail & Rigging, LLC
Managed Rail Fleet
10330 K-Lake Road
Houston, TX 77070
Tel: (281) 826-0009
Fax: (281) 826-0094
www.hli.us.com

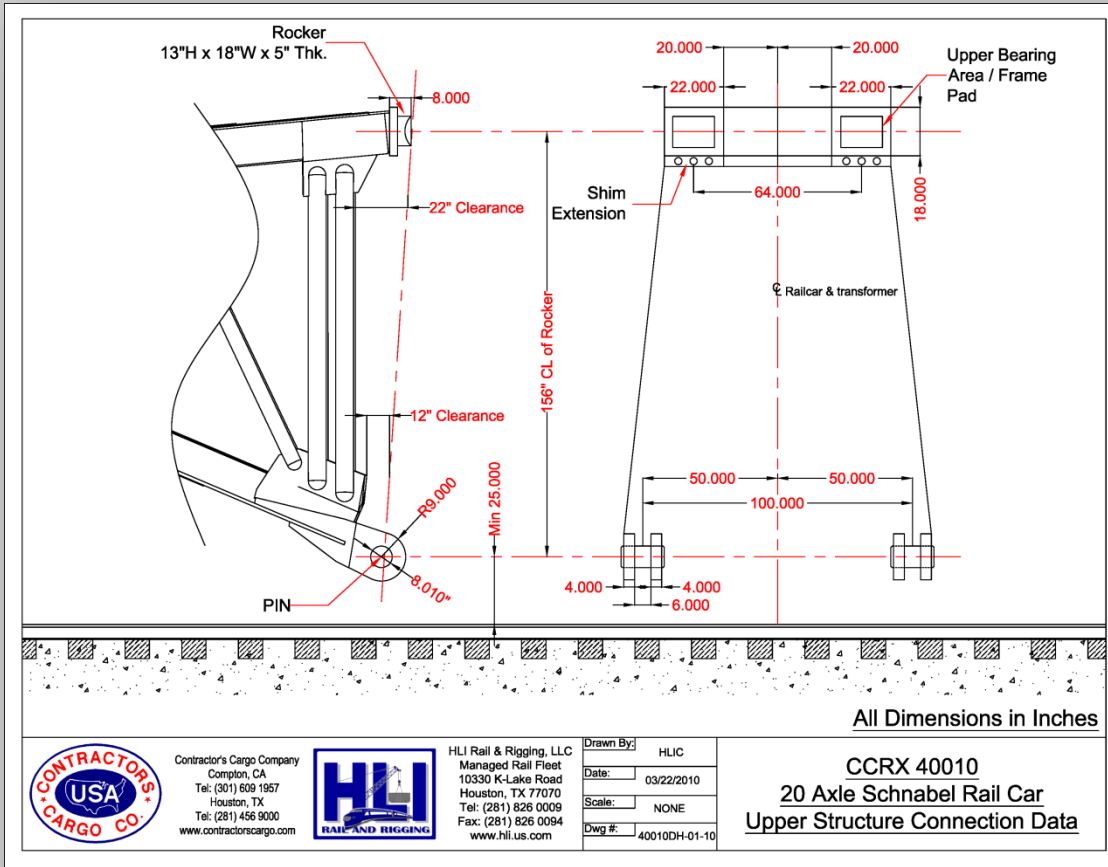
Drawn By:	HLIC
Date:	03/22/2010
Scale:	NONE
Dwg #:	40010SH-00-10

CCRX 40010

20 Axle Schnabel Rail Car

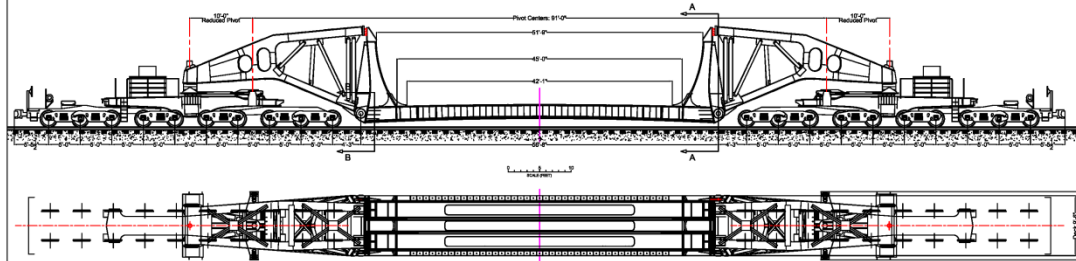


CCR40010 Schnabel Car Connection Detail



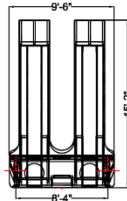


CCRX40010 Schnabel Car Deck-Insert Data

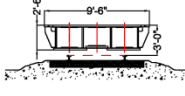


Deck Section Views

View A-A



View B-B



Car Data - With Deck Insert

Number of Axles:	20
Journals A.A.R. "G":	7" x 12"
Wheel Diameter:	33"
Axle Spacing:	5'-0"
Car Light Weight:	354,000 Lbs
Deck Insert Weight:	162,000 Lbs
Combined Empty Weight:	516,000 Lbs
Deck Capacity:	938,000 Lbs
Light Axle Weight:	25,800 Lbs
Max Gross Weight:	1,454,000 Lbs
Axle Load at Gross Weight:	72,700 Lbs
Curve Negotiability (Unloaded):	200 ft Horizontal 2,500 ft Vertical

Special Equipment

10'-0" Reduced Pivot at Each End
Lateral Shifting - 14" Per Side
Vertical Adjustment - ± 6"



Contractor's Cargo Company
Compton, CA
Tel: (301) 609 1957
Houston, TX
Tel: (281) 456 9000
www.contractorscargo.com



HLI Rail & Rigging, LLC
Managed Rail Fleet
10330 K-Lake Road
Houston, TX 77070
Tel: (281) 826 0009
Fax: (281) 826 0094
www.hli.us.com

Drawn By:	HLIC
Date:	03/22/2010
Scale:	NONE
Dwg #:	40010DH-00-10

CCRX 40010
20 Axle Schnabel Rail Car with
42'-0" 938,000 Lbs Deck Insert