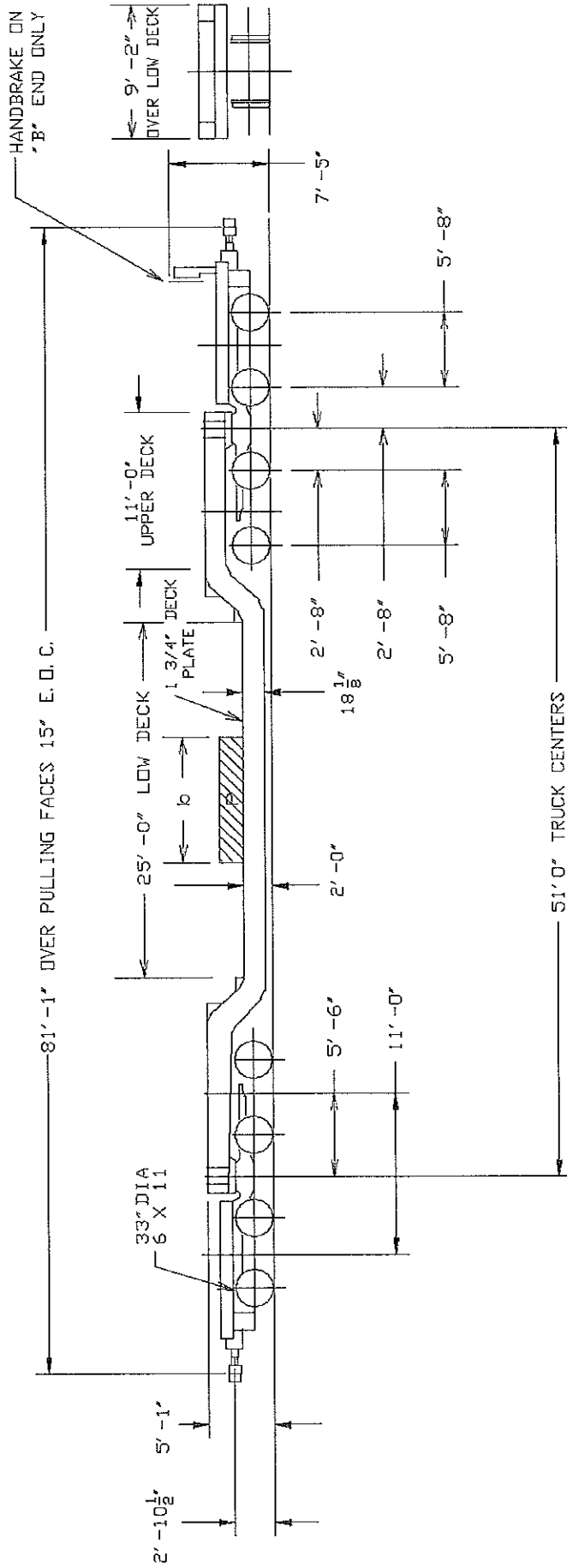


2'-0" DECK HEIGHT ABOVE RAIL IS MEASURED AT CENTER OF CARBODY, INCLUDING CAMBER, INCLUDING CAMBER, WITH A LOAD EQUAL TO 50% OF LOAD LIMIT UNIFORMLY DISTRIBUTED OVER FULL LENGTH OF DEPRESSED DECK.



CAR NUMBER	LOAD LIMIT LBS	LIGHT WEIGHT LBS
130962	307,300	132,700
130963	307,000	133,000
130964	309,700	130,300
130966	308,000	132,000
AVERAGE	308,000	132,000

CAR NUMBERS QTTX 130962-130964  
 CAR NUMBER QTTX 130966



TTX COMPANY  
 CHICAGO, ILLINOIS

150 TON, 25 FOOT DECK  
 DEPRESSED CENTER FLAT CAR

CLASS	DATE	REV	12148
MDH25	06-19-09	C	

MAXIMUM WEIGHT OF PARTIAL LENGTH LOADS

LOAD LENGTH (FT) (L)	LOAD (1000 LBS) (P)
2	260.8
4	266.2
6	271.7
8	277.5
10	283.5
12	289.8
14	296.4
16 & OVER	LOAD LIMIT

-CENTER OF GRAVITY - EMPTY = 26' ATR  
 -CLEARANCE PROFILE WITHIN AAR PLATE "C"