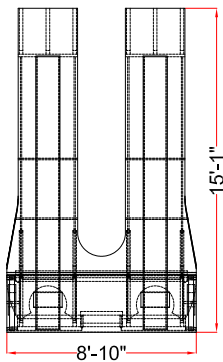
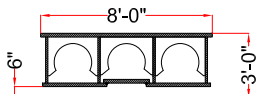


**Deck Section Views**

View A-A



View B-B



(Dimensions are without camber)

**Car Data - With Deck Insert**

Number of Axles:	20
Journals A.A.R. "G":	7" x 12"
Wheel Diameter:	33"
Axle Spacing:	5'-0"
Car Light Weight:	354,000 Lbs
Deck Insert Weight:	130,653 Lbs
Combined Empty Weight:	484,653 Lbs
Deck Capacity:	800,000 Lbs
Light Axle Weight:	24,233 Lbs
Axle Load when Fully Loaded:	64,233 Lbs
Curve Negotiability (Unloaded):	200 ft Horizontal 2,500 ft Vertical

**Special Equipment**

10'-0" Reduced Pivot at Each End  
Lateral Shifting - 14" Per Side  
Vertical Adjustment -  $\pm 6"$

Note: 4" deck camber eliminated at 700,000 Lbs load weight



Compton, CA  
Tel: (301) 609 1957  
Houston, TX  
Tel: (281) 456 9000  
www.contractorscargo.com



HLI Rail & Rigging, LLC  
Managed Rail Fleet  
10330 S-Lake Road  
Houston, TX 77070  
Tel: (281) 826 0009  
Fax: (281) 826 0094  
www.hli.us.com

Drawn By:	HLIC
Date:	03/17/2011
Scale:	NONE
Dwg #:	40010D4-00-11

**CCRX 40010**  
**20 Axle Schnabel Rail Car with**  
**400t Deck Insert**