

Car Data

Number of Axles: 20  
 Journals A.A.R. "G": 7" x 12"  
 Wheel Diameter: 33"  
 Axle Spacing: 5'-0"  
 CG Height (empty): 50"  
 Light Weight: 354,000 lbs  
 Load Limit: 1,100,000 Lbs  
 Gross Weight on Rails: 1,454,000 Lbs  
 Axle Load at Gross Weight: 72,700 Lbs  
 Curve Negotiability (Unloaded): 200 ft Horizontal  
 2,500 ft Vertical

Special Equipment

10'-0" Reduced Pivot Each End  
 Lateral Shifting - 14" Per Side  
 Vertical Adjustment - ± 6"

Pin

Diameter: 8.010"  
 Height: 25" ATR  
 Min Load Height: 9"  
 $\varnothing$  to  $\varnothing$ : 100"



Contractor's Cargo Company  
 Compton, CA  
 Tel: (301) 609 1957  
 Houston, TX  
 Tel: (281) 456 9000  
 www.contractorscargo.com

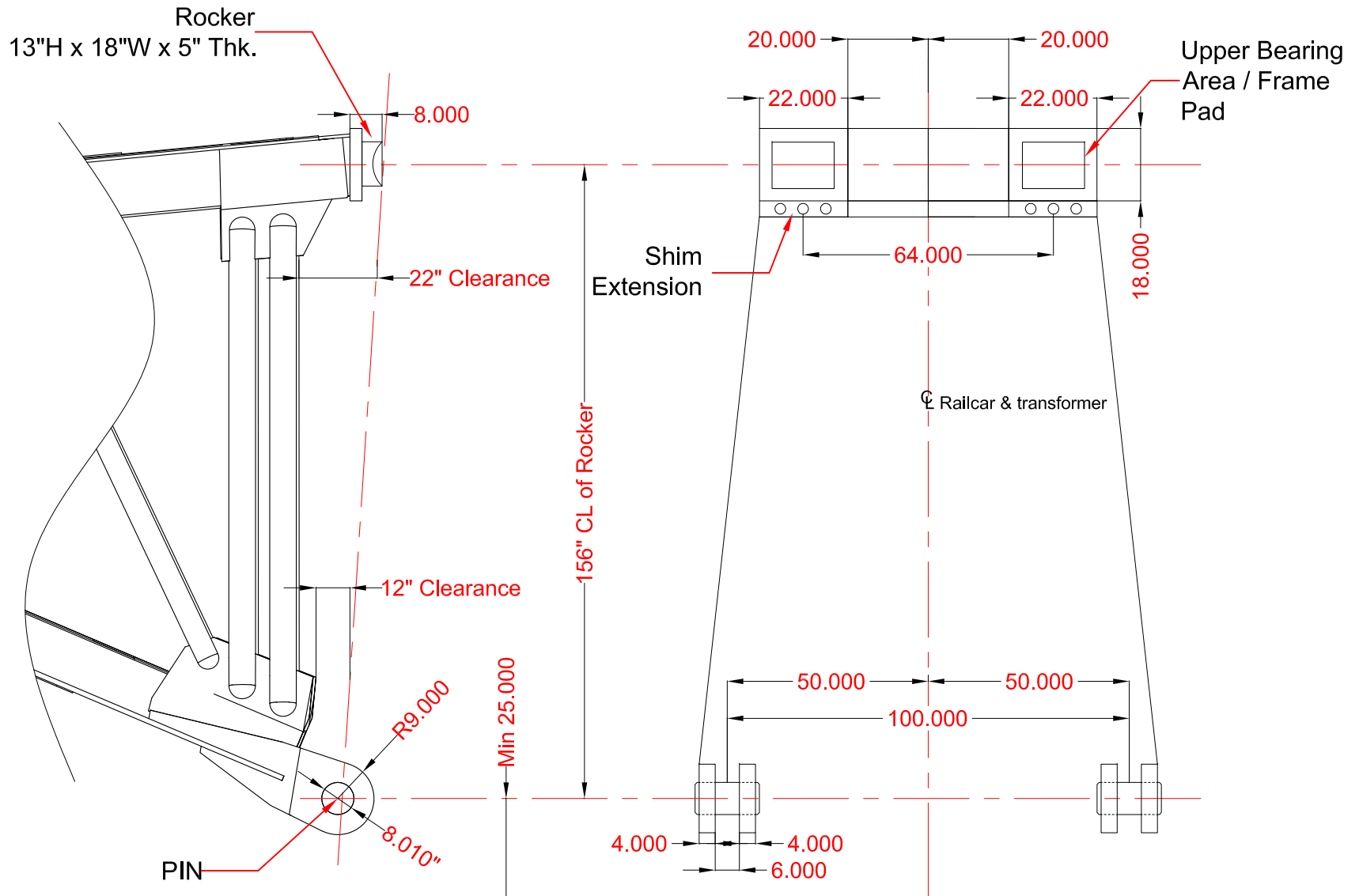


HLI Rail & Rigging, LLC  
 Managed Rail Fleet  
 10330 S-Lake Road  
 Houston, TX 77070  
 Tel: (281) 826 0009  
 Fax: (281) 826 0094  
 www.hli.us.com

Drawn By:	HLIC
Date:	03/10/2011
Scale:	NONE
Dwg #:	40010SH-00-10

CCRX 40010

20 Axle Schnabel Rail Car



All Dimensions in Inches



Contractor's Cargo Company  
 Compton, CA  
 Tel: (301) 609 1957  
 Houston, TX  
 Tel: (281) 456 9000  
 www.contractorscargo.com



HLI Rail & Rigging, LLC  
 Managed Rail Fleet  
 10330 S-Lake Road  
 Houston, TX 77070  
 Tel: (281) 826 0009  
 Fax: (281) 826 0094  
 www.hli.us.com

Drawn By:	HLIC
Date:	03/10/2011
Scale:	NONE
Dwg #:	40010DH-01-10

**CCRX 40010**  
**20 Axle Schnabel Rail Car**  
**Upper Structure Connection Data**